



 **kerbon**
SHOWER WALL



reddot winner 2022





SCOPE TO ADD PERSONALITY.

Your bathroom is the first thing you see early in the morning and your last impression before going to bed at night. Wouldn't it be wonderful to go into a modern environment that leaves nothing to be desired in terms of design, form and function?

A Kerbon shower wall will take you one step closer to that goal.

Whether as a corner solution or an open walk-in shower, a Kerbon designer shower fits the bill.





ELEGANT DESIGN, PRACTICAL APPLICATIONS.

A Kerbon shower wall will turn your bathroom into a place to feel good and a piece of design. The slender structure not only offers you a high degree of flexibility in the spatial planning of your bathroom but above all, a totally new showering experience.

Natural ceramic surfaces emanate their own unique character, ensuring a harmonious ambience.





“
STYLISH
AND
ENDURING.
”



A photograph of a Kerbon shower wall, which is a large, rectangular panel with a light-colored, marble-like pattern. Two towels, one light beige and one dark grey, are hanging from the top of the panel. The wall is part of a shower enclosure, with a metal shower head visible in the bottom left corner.

A FUSION OF PRECISION CERAMIC.

A Kerbon shower wall is an expression of taste and personality. A piece of design on one side, protecting your privacy on the other. Visually attractive with its ceramic finish and a pleasant look and feel, the Kerbon shower wall defines a private space within your bathroom for your personal wellbeing. With plenty of designs and colours, everyone is sure to find the right surround to make them feel at home.

- Innovative system solution for shower partitions, opaque room dividers
- An exclusive eye-catcher, the shower becomes a piece of design
- As a slender, space-saving alternative to a tiled masonry wall

KERBON MACCHIATO



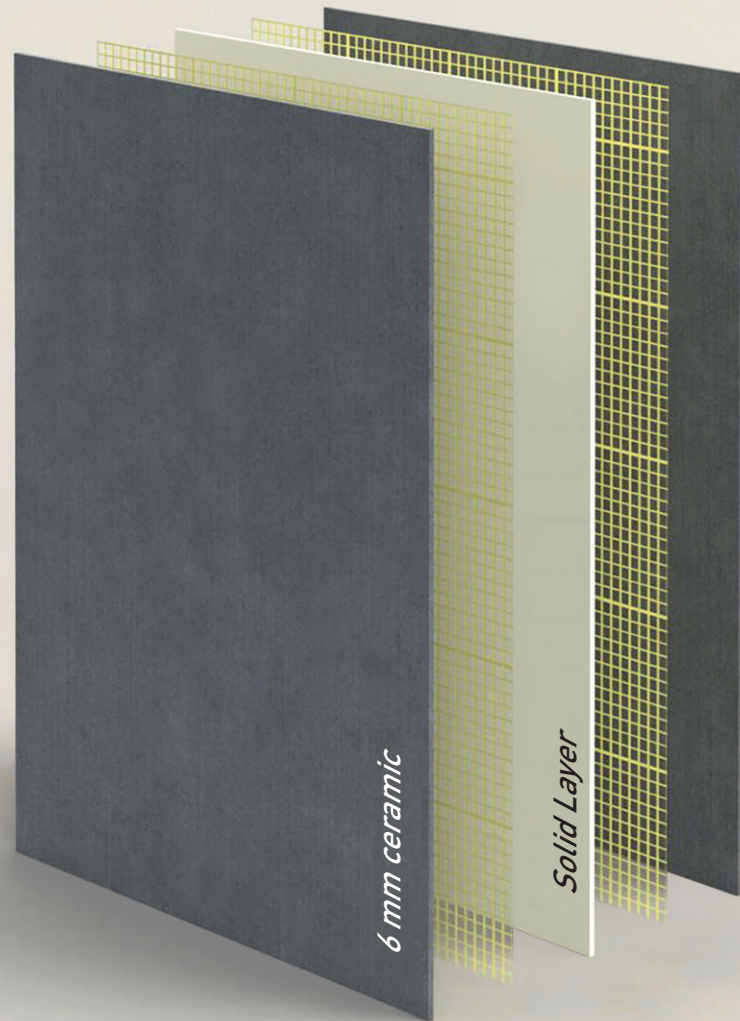
CLASSIC MATERIALS AND DESIGN.

A Kerbon shower wall can either create a single visual element with the walls and floor or a conscious contrast. Its thin wall structure gives it a slender appearance in the room, yet provides maximum stability and safety thanks to the composite technology. The exceptional qualities of ceramic come into their own, making the uniform surface easy to clean whilst being robust.





KERBON PEBBLE



HIGH-TECH CERAMIC WITH SUPERIOR PRECISION.

Ceramic has been a highly valued material for millennia. Ceramic has now been developed still further to create Kerbon, a completely new and innovative material for new applications with especially elegant visual effects.



reddot winner 2022
innovative product

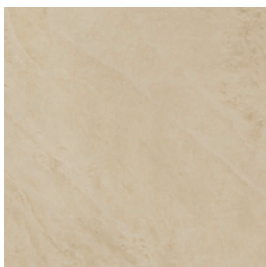


reddot winner 2022

RedDot for Kerbon

The Red Dot Award jury has selected the best products for 2022 and Kerbon impressed them not once but twice.

The composite safety ceramic won awards in the main “Product Design 2022 / Materials and Surfaces” category and the “Innovative Products” meta category.



SAND*
Y-K10001



CEMENT*
Y-K10002



TAUPE*
Y-K10003



GRAPHITE*
Y-K10004



MACCHIATO POLISHED*
Y-K10005



CREMA POLISHED*
Y-K10006



EARL GREY POLISHED
Y-K10007



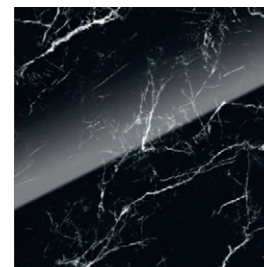
NATURAL
Y-K10008



LIGHT GREY
Y-K10009



STONE GREY
Y-K10010



NERO POLISHED
Y-K10011



DARK
Y-K10012



CORTEN
Y-K10013



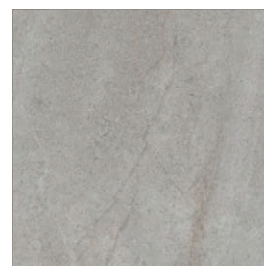
CONCRETE
Y-K10014



BASALT*
Y-K10015



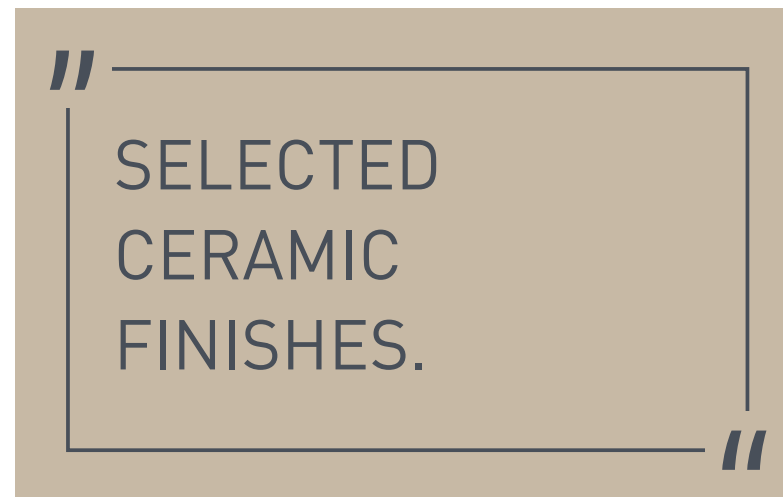
CLAY*
Y-K10016



PEBBLE*
Y-K10017



LAVA*
Y-K10018



*Surface finish also available as 6 mm porcelain stoneware tiles



resistant



easy-care



customisable



opaque



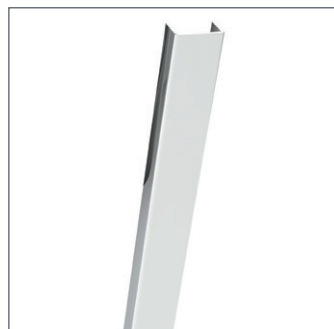
scratch-resistant



safe

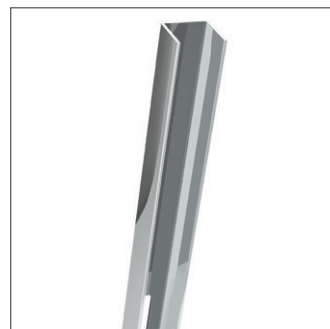
KERBON ACCESSORIES.

The Kerbon shower wall is the solution for bathrooms with sophistication.
A complementary selection of accessories completes the range.



1.4 x 200 cm

V2A polished stainless steel
cover strip
Y-K90001



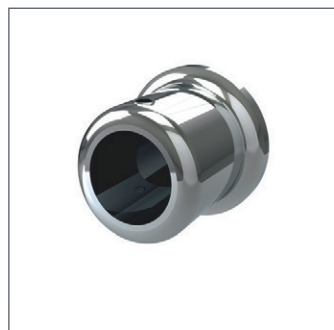
1.4 x 200 cm

V2A polished stainless steel
mounting strip with slotted hole
Y-K90011



2 x 150 cm

V2A polished stainless steel
bracket and rod
Y-K90012



2.0 cm

V2A polished stainless steel
wall sleeve, straight
Y-K90013



2.0 cm

V2A polished stainless steel
wall sleeve for diagonal mounting
Y-K90014



1.4 x 250 cm

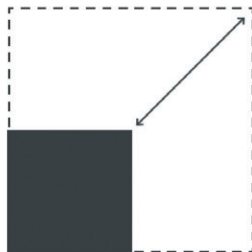
V2A polished stainless steel
mounting strip with adhesive leg
Y-K90015

PERFECTLY PROPORTIONED.

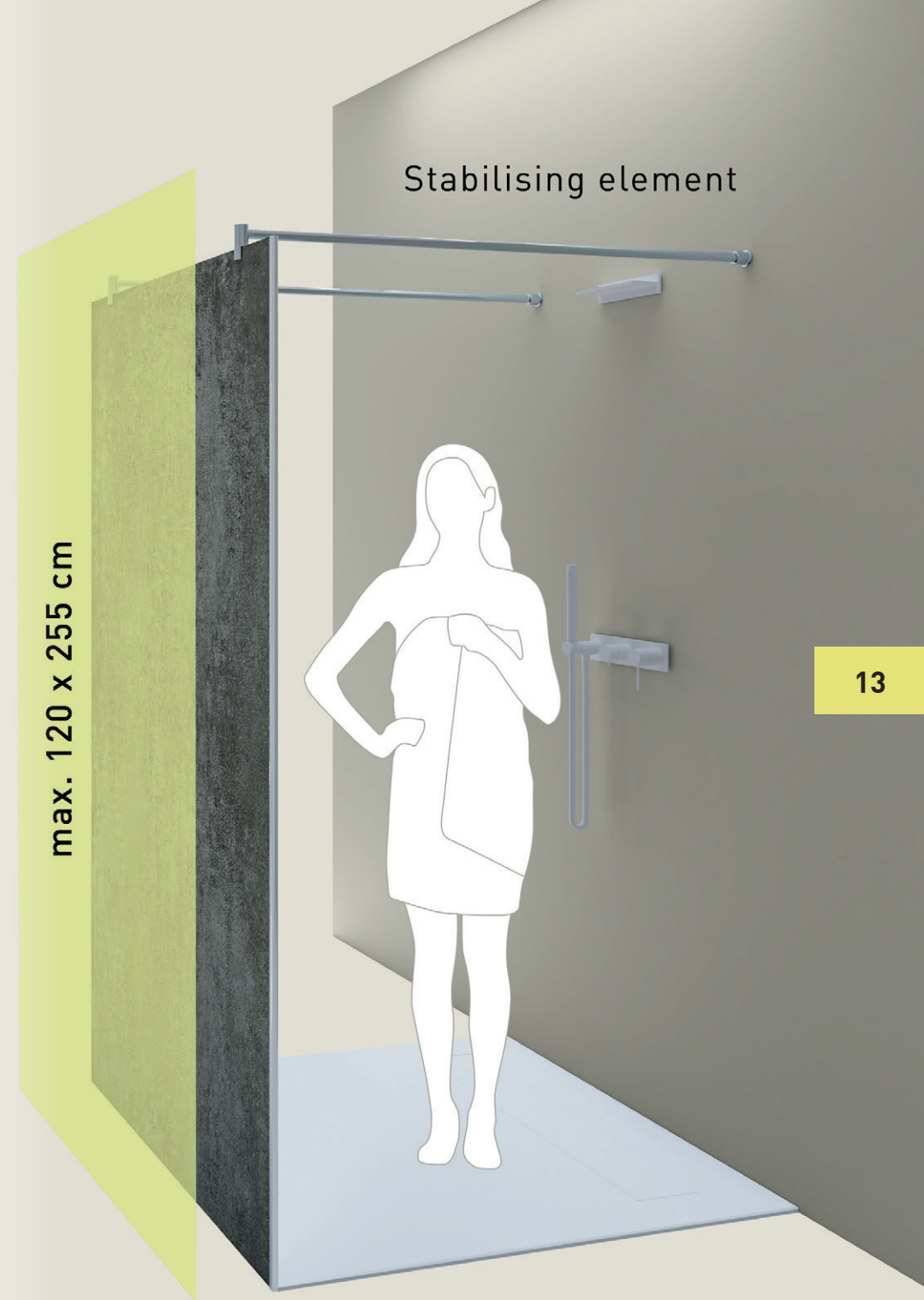
The Kerbon shower wall adapts perfectly to your space because as well as the wall measuring 120 x 200 cm, custom sizes can also be manufactured for your personal bathroom. It is also possible to put together different ceramic finishes on the front and back so you can design your own personal Kerbon shower wall for your dream bathroom.



TWO-TONE
Y-K19999



CUSTOM SIZE
Y-K19995





YouTube video
Pendulum impact test

14



Test based on EN 12600

KERBON IN DETAIL.

1



2



Please visit our YouTube channel
for more information on
installation¹ and handling²

SIZE	120 x 200 cm (special sizes up to max. 120 x 255 cm)
EDGES	bevelled and polished
DESIGNS	18 finishes (customisation of different fronts and backs)
AREAS OF APPLICATION	private and commercial
INSTALLATION*	Additional information on installation ¹ and handling ²
SAFETY	EN 12600 pendulum impact test (based on EN 12600 method)
STAIN RESISTANCE	Test standard ISO 10545-14, min. Class 3
CHEMICAL RESISTANCE	Test standard ISO 10545-13, Class 4 – 5
RESISTANCE TO DEEP ABRASION	Test standard ISO 10545-6, is met
HOUSEHOLD CHEMICALS, BATH WATER ADDITIVES	Test standard ISO 10545-13, min. B



Steuler Fliesengruppe AG
Schönebecker Strasse 101
28759 Bremen, Germany
Telephone +49 421 6262 0
info@kerbon.de

Discover the elegant
way to redesign
your shower!



www.kerbon.de



Y07336001 202205MD